

September 16th, 2019

Thought for the Day:

Bellwork: While you are waiting to get the new bellwork, please get out the Would You Rather paper from last week. Fill out your agenda. Keep your agenda **OPEN** so we can check it!



**Monday**

**Tuesday**

**Wednesday**

**Thursday**

**Friday**

HW:  
None

HW: Finish Map  
Skills Practice  
(due Wed)

HW: None

HW: None

Deserts Map  
TEst  
HW: None

September 17th, 2019

Bellwork: A constitution is a document that outlines the laws of a country and determines the powers the government has as well as the rights of the citizens. If you were able to create a new constitution for our country, what laws and/or rights would you include?

Thought for the Day:



**Monday**

**Tuesday**

**Wednesday**

**Thursday**

**Friday**

HW: None

HW: Finish  
Map Skills  
Practice

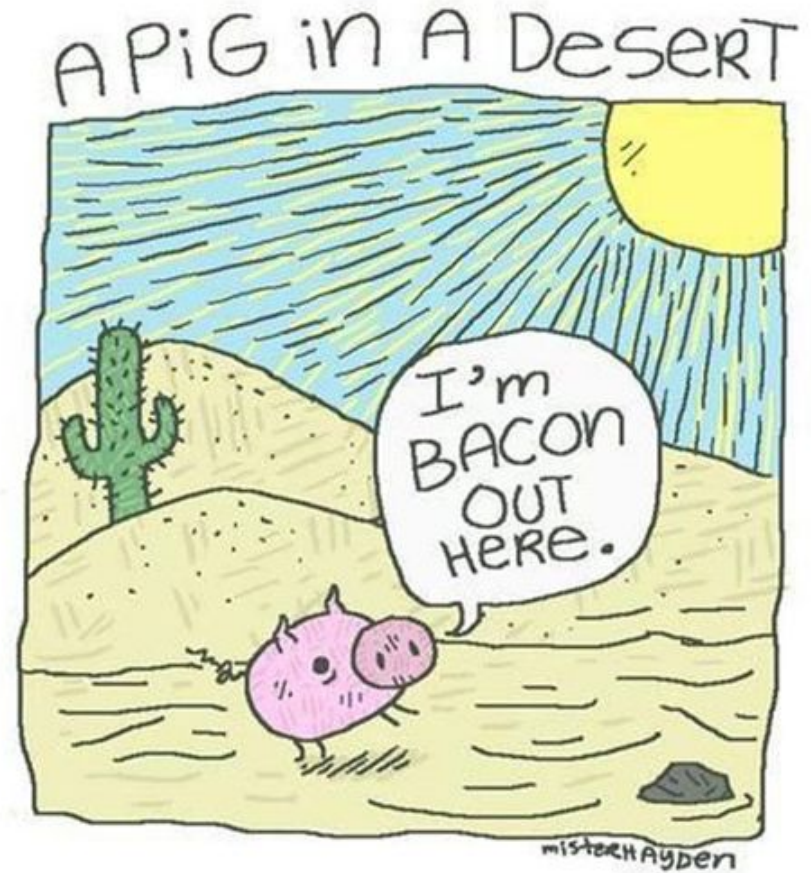
HW: None

HW: None

Deserts  
Map Test  
HW: None

September 18th, 2019

Bellwork: Where/what is the largest desert on earth (hint: it might not be where you think it is)?



**Monday**

**Tuesday**

**Wednesday**

**Thursday**

**Friday**

HW: None

HW: Finish Map Skills Practice (due Wed)

HW: None

HW: None

Deserts Map Test  
HW: None

Thought for the Day:

September 19th, 2019

**Top ten largest deserts in the World – Biggest Deserts on Earth**

Rank	Desert	Area (sq mile)	Location
1	Antarctic Desert	5,600,000	Antarctica
2	Sahara Desert	3,320,000	North Africa
3	Arabian Desert	900,000	Middle East
4	Gobi Desert	500,000	Central Asia
5	Kalahari Desert	360,000	Southern Africa
6	Great Victoria Desert	250,000	Australia
7	Patagonian Desert	200,000	South America
8	Syrian Deset	200,000	Syria, Jordan, Iraq
9	Great Basin Desert	190,000	United States
10	Chihuahuan Desert	175,000	North America

Bellwork: Look at the chart to the right. What is the only continent that is not represented?

**Monday**

**Tuesday**

**Wednesday**

**Thursday**

**Friday**

HW:  
None

HW: Finish Map  
Skills Practice  
(due Wed)

HW: None

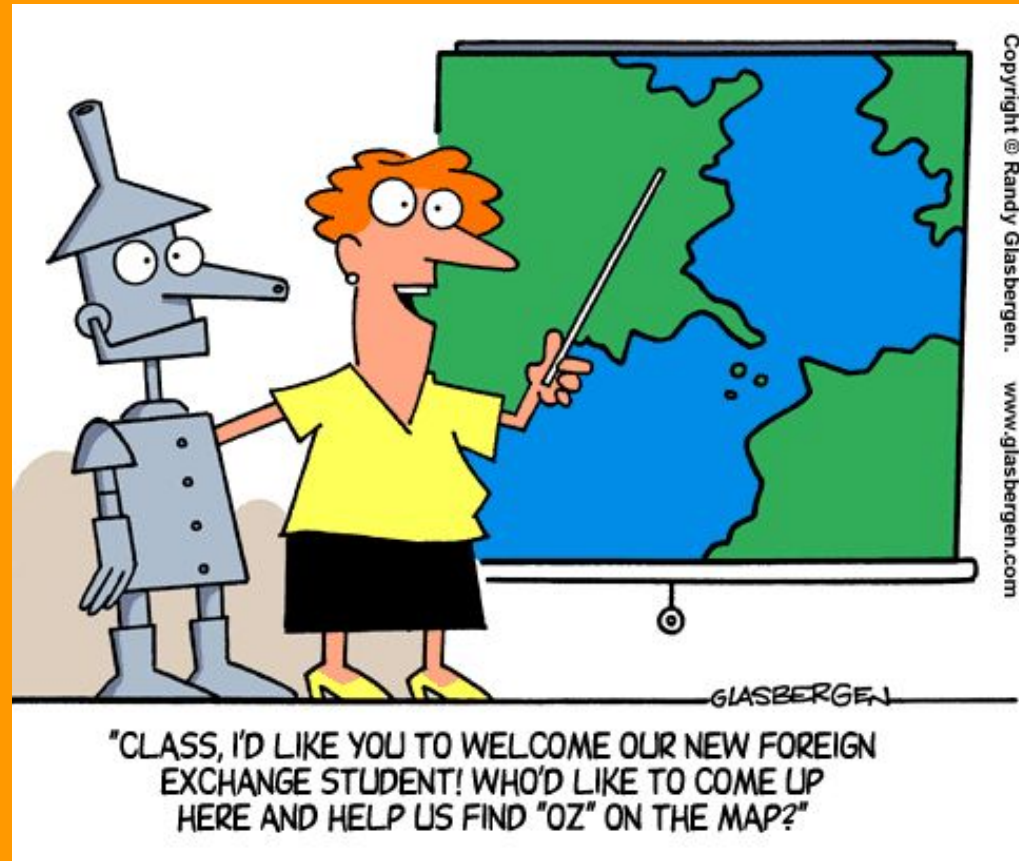
HW: None

Deserts  
Map Test  
HW: None

# September 20th, 2019

Thought for the Day:

Bellwork: Identify 3 times when you've used a map. For example: at the mall to find a store



Monday	Tuesday	Wednesday	Thursday	Friday
HW: None	HW: Finish Map Skills Practice (due Wed)	HW: None	HW: None	Deserts Map Test HW: None

# September 23rd, 2019

## Thought for the Day

Bellwork: What do you think the criteria or requirement is for a place to be considered a "country" and not a city, state, etc.?

FILL OUT YOUR AGENDA FOR THE ENTIRE WEEK EXACTLY AS IT IS SHOWN BELOW. KEEP YOUR AGENDA OPEN SO WE CAN CHECK IT!



Concerned about the poor geography skills of U.S. students, Westfield School District found a creative way to address the problem.

**Monday**

**Tuesday**

**Wednesday**

**Thursday**

**Friday**

HW: Study

HW: Study

HW: Study

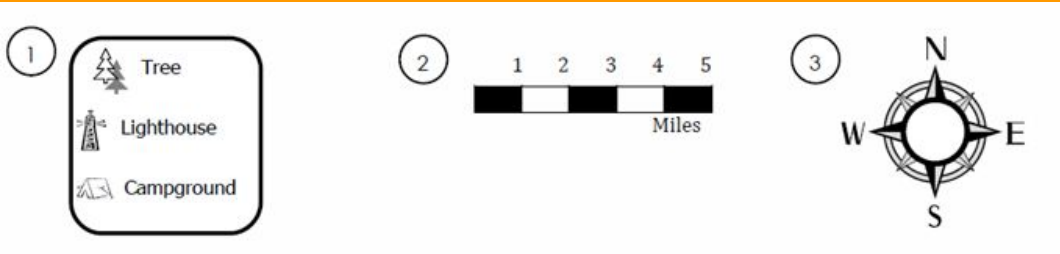
Early Release Day  
Map Skills Test  
HW: None

N.A. #1  
Map Test  
HW: None

# September 24th, 2019

Bellwork:

Thought for the Day:



Above are 3 parts of a map.  
Identify what they are called.

- 
- 
- 



"Turn off your cell phones and your GPS's."

**Monday**

**Tuesday**

**Wednesday**

**Thursday**

**Friday**

HW: Study

HW: Study

HW: Study

Early Release Day  
Map Skills Test  
HW: None

N.A. #1  
Map Test  
HW: None

September 25th, 2019

Bellwork: Think of a scenario where you may need (or prefer) to use a paper map instead of a digital map.



**Monday**

**Tuesday**

**Wednesday**

**Thursday**

**Friday**

HW: Study

HW: Study

HW: Study

Early Release Day  
Map Skills Test  
HW: None

N.A. #1  
Map Test  
HW: None

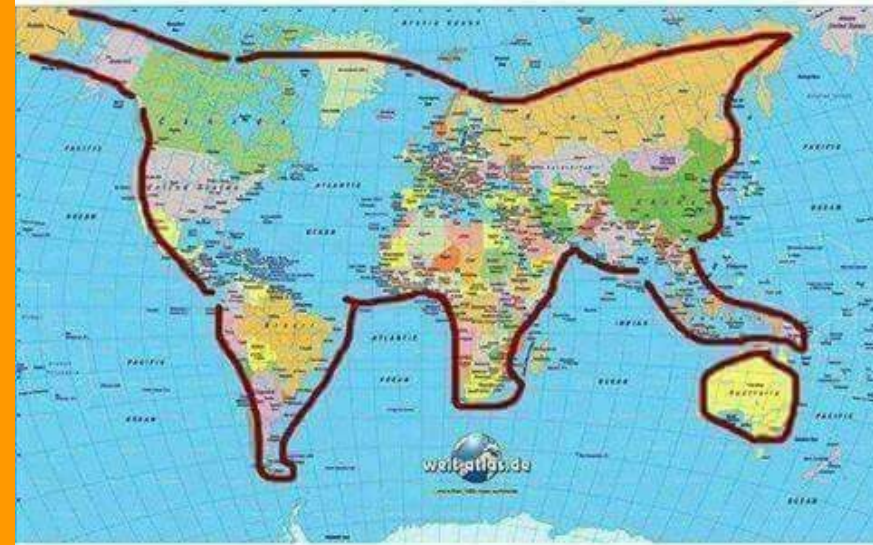


September 26th, 2019

Thought for the Day:

Bellwork: What type of map would you use to find the capitals and cities of countries in Africa? Use your Types of Maps notes if you need help.

Did you know?



The Earth is actually a kitten

**Monday**

**Tuesday**

**Wednesday**

**Thursday**

**Friday**

HW: Study

HW: Study

HW: Study

Early Release Day  
Map Skills Test  
HW: None

N.A. #1  
Map Test  
HW: None

September 27th, 2019

Thought for the Day:

Bellwork: Do you think you could find your home on a paper map of Franklin county? Why or why not? TURN YOUR BELLWORK IN WHEN FINISHED!



**Monday**

**Tuesday**

**Wednesday**

**Thursday**

**Friday**

HW: Study

HW: Study

HW: Study

Early Release Day  
Map Skills Test  
HW: None

N.A. #1  
Map Test  
HW: None